

500 RANGE
ELECTRONIC SCALES

WIND series





1 PRINTER
RECEIPTS
OR LABELS



**LCD
SEGMENT
DISPLAY**



**OPTIONAL
LCD GRAPHIC
DISPLAY**



**UP TO
5,000 PLUs**



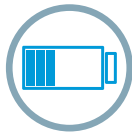
**UP TO
10 VENDORS**



**ETHERNET
TCP/IP**



**WI-FI
OPTIONAL**



**OPTIONAL
RECHARGEABLE
INTERNAL
BATTERY**



**METROLOGICAL
VERIFICATION
OPTIONAL (EU)**

Characteristics and functionality

Main characteristics

- Electronic scale with higher visibility display options.
- Models with receipt printer or label printer (suitable for receipts).
- Functional and robust design.
- Compliance with EU Regulation 1169/2011 on the provision of food information to consumers (only for W-025).

Features

- Extensive information for each PLU: normal price, price for weight scales and by kg/100 g (in W-020, W-020 B and W-025), 2 names of 20 characters (1 in W-010, W-010 B and W-015), 10 free texts of 24 characters (5 in W-010, W-010 B and W-015), 1 text of 3,000 characters (in W-025), profitability codes, etc.
- PLU search by code or name.
- Preset keys to programming menus: to change prices, register PLUs or vendors, etc.
- Direct access to 999 PLUs from the keyboard.
- Drill down menu.
- Printing of scale menus.
- 2 programmable macros (in W-020, W-020 B and W-025): recording of a sequence of keys to create direct access to

any task (reopening of receipts, lists, change in batcher number, etc.).

- Sales and management reports: sales (by article, vendor, time frames, last month, etc.), balance available in the cash drawer, modified PLUs, etc.
- Fast and reliable communication between scales, with PC and mobile devices (via DWS).
- Stocks management on the scale.
- Stock / order mode.

Capacity / Accuracy

- Multi-range (3,000 divisions): 6 kg / 2 g - 15 kg / 5 g.
- Optional:
 - Mono-range (3,000 divisions): 15 kg / 5 g or 30 kg / 10 g.
 - Multi-range (3,000 divisions): 15 kg / 5 g - 30 kg / 10 g.
 - Mono-range (6,000 divisions): 12 kg / 2 g or 30 kg / 5 g.

Available formats

- Flat.
- Pole.

Construction

- Highly resistant ABS plastic casing.
- Stainless steel plate.

Displays

- Backlit LCD segment display (W150.2 x H43.4 mm) for vendor and buyer (showing weight, price / kg, total, tare, vendors and name of articles).
- Optional:
 - LCD matrix graphic display (W134 x H41 mm) for vendor and buyer, for W-020, W-020 B and W-025. Possibility of showing: logos, profitability codes and warning messages sent from a PC (on vendor display) and advertising messages with animated effects on buyer display.

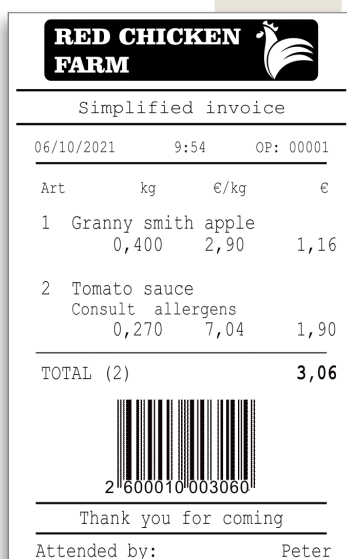
Printer

- Models available with 1 printer for receipts or 1 printer for labels (also suitable for receipts by changing the paper roll and the working mode).
- 54 mm thermal printer.
- Resolution: 8 dots/mm.
- Speed depending on models:
 - W-020 and W-025: 100 mm/sec.
 - W-010 and W-015: 80 mm/sec.
 - W-010 B and W-020 B: 60 mm/sec.

Receipts

- All the models:
 - 15 fonts (6 monospaced + 9 multispaced: more modern and legible).
 - Up to 40 items.
 - EAN-13 barcode.
 - 9 payment methods.
 - Total in National currency and other 3 different currencies.
 - Discounts per line and total.

- W-010, W-010 B and W-015:
 - 2 fixed formats.
- W-020, W-020 B and W-025:
 - 2 fixed formats + 1 programmable format.
 - 4 logos per receipt.
 - Name of vendor.
 - Customers on account.



Labels

- All the models:
 - 15 fonts (6 monospaced + 9 multispaced: more modern and legible).
 - 40 logos.
 - EAN-13 barcode.
 - 40 fields of information.
 - 100 programmable texts.
 - Manual and automatic pre-packaging modes.
 - Automatic adjustment of the paper detection sensor.
- W-015:
 - From W30 x L30 mm to W60 x L80 mm.
 - 20 fixed formats + 5 programmable formats.
 - 1 type of generic traceability (for meat, fish, fruits, vegetables, etc.) up to 10 products. Included in the prevailing European legislation on bovine traceability.
- W-025:
 - From W30 x L30 mm to W60 x L100 mm.
 - 20 fixed formats + 10 programmable formats.
 - 3 levels of totals.
 - Printing of "n" identical labels.
 - Printing with 90°, 180° and 270° rotation.
 - Packaging date, expiry date and extra date (for any application).
 - Alphanumeric batch number.
 - 2 types of generic traceability (for meat, fish, fruits, vegetables, etc.) up to 20 products. Included in prevailing European legislation on bovine traceability.
- W-010, W-010 B and W-015:
 - Minimum letter size: 1.2 mm.
 - For direct sale receipts and labels: possibility of indicating in the PLU name (with an * or other symbol) those that contain allergens and programming a text, such as "* Consult allergens".
 - Labels do not comply with the labelling of packaged food Regulation (only 5 texts of 24 characters are available).

Food information



- W-020, W-020 B and W-025:
 - Minimum letter size: 1.2 mm.
 - Effect (**bold**, underlined, or **both**) for each character in the text (in W-025, only available under license of labelling of packaged food Regulation; see options).
 - Possibility of using the general text "G" (2,048 characters) for ingredients, in lower case or UPPER CASE to highlight allergens (in W-025, only available under license of labelling of packaged food Regulation; see options).
 - Possibility of including a table of nutritional facts.
 - Free texts (10 x 24 characters).
 - For direct sale receipts and labels: possibility of indicating in the PLU name (with an * or other symbol) those that contain allergens and programming a text, such as "* Consult allergens".
 - Possibility of printing 2 labels for each operation: programmable by PLU, configurable information, 2nd automatic or manual label (also to be used as promotional labels). In W-025, only available under license of labelling of packaged food Regulation; see options.
- W-025: Compliance with EU Regulation 1169/2011 on the provision of food information to consumers as of 13 December 2016; see options.

Communications

- TCP/IP Ethernet for interconnection and connection to PC.
- RS-232, for connection to scanner (in W-020, W-020 B and W-025).
- Optional: Wi-Fi.

Security

- Access to different protected programming menus via configurable passwords.

Interconnection

- W-010, W-010 B and W-015: up to 5 scales per section.
- W-020, W-020 B and W-025: up to 10 scales per section.

Connectivity with other devices

- PC.
- Barcode scanner (powered by the scale –5 VDC–) to read EAN-13 barcodes (in W-020, W-020 B and W-025).
- Cash drawer.

Software (See section on software)

PC software:

- DFS:
 - Programming of scales.
 - Receipt of sales data.
 - Data backup copy.
 - Graphic design of receipts and labels (DLD).
 - Design and management of advertising images for graphic display.
- Integration tools: in Windows or Linux to facilitate communication with the Back-Office.

Scale firmware:

- DWS (Dibal Web Server):
 - Allows access to the information on each scale from any computer or mobile device with an Internet browser.

Power supply

- Mains: 110 up to 230 VAC.
- Depending on the models, also:
 - High performance rechargeable internal battery (W-010 B and W-020 B): up to 36 hours of life (calculated for 1,000 receipts, with 3 articles per receipt)* and connector to external battery 12 V.
 - Anti-blackout rechargeable internal battery 24 V and connector to external battery 24 V.

Energy consumption

- 6.5-91 W (depending on the conditions of use).

* With segment display and back lighting disconnected. The charging and autonomy times may vary considerably in accordance with the temperature, age and condition of the batteries, use of back lighting, frequency of use of the printer, interconnection, etc.

1 RECEIPT PRINTER

Flat
Format

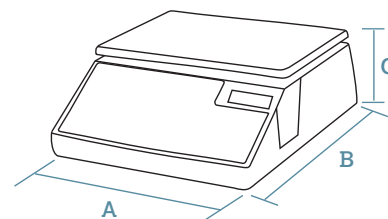


Dimensions

DATA IN mm

- A 365
- B 440
- C 160

Plate dimensions: L360 x W260 mm.
Weight with packaging: 10.0 kg.



	Displays	Printer	PLUs	Direct PLUs	Vendors	Power	Capacity / Accuracy	Reference
W-010 F	LCD Segment	Receipts	2,000	45x2 +4x2*	5	Mains	6 kg / 2 g - 15 kg / 5 g	7W101PBLGE__
W-010 B F	LCD Segment	Receipts	2,000	45x2 +4x2*	5	Mains / battery	6 kg / 2 g - 15 kg / 5 g	7W111PBLGE__
W-020 F	LCD Segment	Receipts	5,000	40x2 +9x2*	10	Mains	6 kg / 2 g - 15 kg / 5 g	7W201PBLGE__
W-020 B F	LCD Segment	Receipts	5,000	40x2 +9x2*	10	Mains / battery	6 kg / 2 g - 15 kg / 5 g	7W211PBLGE__

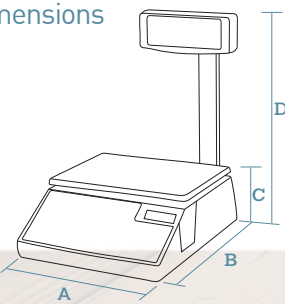
* Using the Shift key and those of Vendor.

1 RECEIPT PRINTER

Pole
Format



Dimensions



DATA IN mm

- A** 365
- B** 440
- C** 160
- D** 530

Plate dimensions:
L360 x W260 mm.

Weight with packaging: 11.0 kg.



	Displays	Printer	PLUs	Direct PLUs	Vendors	Power	Capacity / Accuracy	Reference
W-010 P	LCD Segment	Receipts	2,000	45x2 +4x2*	5	Mains	16 kg / 2 g - 15 kg / 5 g	7W101TBLGE__
W-010 B P	LCD Segment	Receipts	2,000	45x2 +4x2*	5	Mains / battery	6 kg / 2 g - 15 kg / 5 g	7W111TBLGE__
W-020 P	LCD Segment	Receipts	5,000	40x2 +9x2*	10	Mains	6 kg / 2 g - 15 kg / 5 g	7W201TBLGE__
W-020 B P	LCD Segment	Receipts	5,000	40x2 +9x2*	10	Mains / battery	6 kg / 2 g - 15 kg / 5 g	7W211TBLGE__

* Using the Shift key and those of Vendor.

1 LABEL PRINTER (OR RECEIPT)

Flat
Format

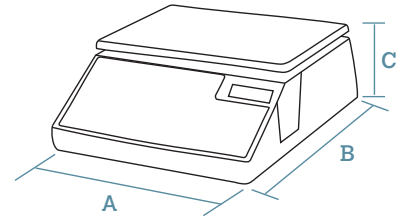


Dimensions

DATA IN mm

- A 365
- B 440
- C 160

Plate dimensions: L360 x W260 mm.
Weight with packaging: 10.0 kg.



	Displays	Printer	PLUs	Direct PLUs	Vendors	Power	Capacity / Accuracy	Reference
W-015 F	LCD Segment	Labels (or Receipts)	2,000	45x2 +4x2*	5	Mains	6 kg / 2 g - 15 kg / 5 g	7W151PBLGE__
W-025 F	LCD Segment	Labels (or Receipts)	5,000	40x2 +9x2*	10	Mains	6 kg / 2 g - 15 kg / 5 g	7W251PBLGE__

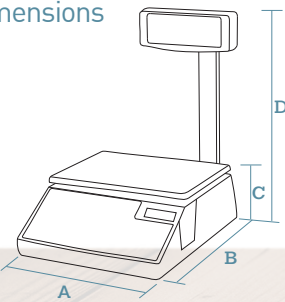
* Using the Shift key and those of Vendor.

1 LABEL PRINTER (OR RECEIPT)

Pole
Format



Dimensions



DATA IN mm

- A** 365
- B** 440
- C** 160
- D** 530

Plate dimensions:
L360 x W260 mm.

Weight with packaging: 11.0 kg.



	Displays	Printer	PLUs	Direct PLUs	Vendors	Power	Capacity / Accuracy	Reference
W-015 P	LCD Segment	Labels (or Receipts)	2,000	45x2 +4x2*	5	Mains	6 kg / 2 g - 15 kg / 5 g	7W151TBLGE__
W-025 P	LCD Segment	Labels (or Receipts)	5,000	40x2 +9x2*	10	Mains	6 kg / 2 g - 15 kg / 5 g	7W251TBLGE__

* Using the Shift key and those of Vendor.

Options



> Graphic display (W134 x H41 mm).

Option	Characteristics	Reference
Capacity 15 kg / 5 g	Mono-range (3,000 divisions).	...N_>(*)
Capacity 30 kg / 10 g	Mono-range (3,000 divisions).	...Y_(*)
Capacity 15 kg / 5 g - 30 kg / 10 g	Multi-range (3,000 divisions).	...F_(*)
Capacity 12 kg / 2 g	Mono-range (6,000 divisions).	...V_(*)
Capacity 30 kg / 5 g	Mono-range (6,000 divisions).	...P_(*)
Graphic displays (W134 x H41 mm)	LCD matrix graphic display for buyer and vendor. For W-020, W-020 B and W-025.	Consult
Wi-Fi	Wireless communications (IEEE 802.11n).	Consult
Anti-blackout	Anti-blackout internal battery 24 V + external battery connector 24 V.	Consult
License for labelling of packaged food Regulation	It is necessary to comply with EU Regulation 1169/2011 on the provision of food information to consumers in W-025. The license includes the possibility of: highlighting allergens in bold, underlined or both; use the G text of 2,048 characters for ingredients; and print 2 labels for each operation. This license includes the DWS firmware license.	Consult
DFS software	Scale configuration, receipt of sales data for processing with other IT applications, data backup (LBS), and labels and receipts graphic design (DLD). (See section on software).	7340F1U1
		7340FNU1
		7340D1U1
		7340DNU1
Technical DWS Firmware	For the remote configuration of the scale. (See section on software).	7340W101
Full DWS Firmware	For the remote configuration of the scale and the processing of the information generated. (See section on software).	7340WN01
Metrological verification (M)	According to EU weighing directives. (See section on equipment metrological verification).	Consult

(*) The scale references with this capacity are obtained by replacing the last characters of the reference for the standard scale with the indicated ending.

Accessories



Ref: BCR71

Small Italian plate

L357 x W235 x H55 mm.



Ref: BCR72

Large Italian plate

L407 x W284 x H60 mm.



Ref: 49-3280B

Flat plate with bar

L360 x W260 mm.



Ref: BHN99

Interconnection switch

For scales with rechargeable internal battery (W-010 B and W-020 B).



Ref: BHN85

Battery for the switch

Power battery for the BHN99 interconnection switch.



Ref: BCH18

Barcode scanner

Includes connection cable to the scale (for W-020, W-020 B and W-025).

Note:

- The references correspond to standard models: Dark gray ABS plastic casing, backlit LCD segment display, stainless steel flat plate, cash drawer connector and TCP/IP Ethernet communications. Capacity/Accuracy: 6 kg / 2 g – 15 kg / 5 g.